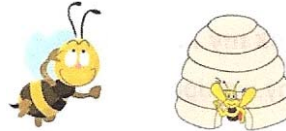




# Jobie-to-Bee Hive Involvement and Participation Award 2009-2010



**Bethel:** \_\_\_\_\_

**Bee Helper:** \_\_\_\_\_

**Section 1: Membership**

**1 point for each new Jobie-To-Bee ceremony held.**  
(Remember to submit the names to the Grand Marshal)

\_\_\_\_\_

**1 point for holding prospective Jobie-To-Bee party.**  
(To be planned by the Jobies-To-Bee)

\_\_\_\_\_

**Section 2: Meetings/Activities**

**1 point for each time a Jobie-To-Bee activity is held during the regular Bethel meeting.**

\_\_\_\_\_

**1 point for each time a Jobie-To-Bee watches or participates in the closing ceremony of a regular Bethel meeting.**

\_\_\_\_\_

**1 point for Jobies-To-Bee present at the Bethel Installation of Officers.**

\_\_\_\_\_

**1 point for each time a Jobie-To-Bee participates in a social activity planned by the Bethel.**

\_\_\_\_\_

**1 point for each time a Jobie-To-Bee participates in activities that promote Job's Daughters.**

\_\_\_\_\_

**Section 3: Special Events**

**1 point for each Jobie-To-Bee attending Grand Session.**

\_\_\_\_\_

**1 point for each Jobie-To-Bee attending Mini Session.**

\_\_\_\_\_

1 point for each Jobie-To-Bee participating in the Mid America HIKE.

\_\_\_\_\_

1 point for each Jobie-To-Bee participating in the Lincoln/Truman (L/T) HIKE.

\_\_\_\_\_

1 point for each Jobie-To-Bee attending the Miss Missouri/Jr. Miss Missouri pageant.

\_\_\_\_\_

1 point for each Jobie-To-Bee attending the Grand Bethel Honored Queen's reception.

\_\_\_\_\_

**Section 4: Fundraising/Charity**

1 point for each Jobie-To-Bee who participates in the Bethel fundraising activities.

\_\_\_\_\_

1 point for Jobies-To-Bee planning their own fundraising activity.

\_\_\_\_\_

1 point for each Jobie-To-Bee who collects pledges for L/T or Mid America HIKE.

\_\_\_\_\_

1 point for each Jobie-To-Bee that participates in the Bethel charity project.

\_\_\_\_\_

**TOTAL POINTS**

\_\_\_\_\_

To receive the award there needs to be a minimum of 10 points with at least 1 point earned in each section.

**Bethel Guardian Signature:** \_\_\_\_\_

**Jobie-To-Bee Helper's Signature:** \_\_\_\_\_

**Date:** \_\_\_\_\_ **Number of active bees:** \_\_\_\_\_

Please list the names of the active Jobies-To-Bee (print clearly or type the names)

This form must be postmarked by May 31, 2010 and sent to the Grand Marshal.  
Linda Meunier, 354 Cocoa Court, Fenton, MO. 63026-4973  
Questions: [lmeunier12-13@msn.com](mailto:lmeunier12-13@msn.com) or H 636-305-0163 or C 314-420-3291