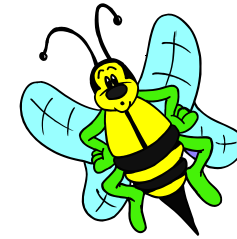




**Jobie-to-Bee Beehive  
Achievement Award  
2011-2012**



**Bethel #:** \_\_\_\_\_

**Bee Keeper:** \_\_\_\_\_

***Section 1: Membership***

*1 Point for each new Jobie-to Bee Member Initiated or Ceremony held.  
(Remember to submit the names to the Grand Marshal)* \_\_\_\_\_

*1 Point for holding a prospective Jobie-To-Bee activity.  
(To be planned by the Jobies-To-Bee)* \_\_\_\_\_

***Section 2: Meetings/Activities***

*1 Point for each Jobie-To-Bee Meeting held.* \_\_\_\_\_

*1 Point for each time a Jobie-To-Bee is present for the Opening Ceremony  
of a regular Bethel meeting.* \_\_\_\_\_

*1 Point for each Jobie-To-Bee in attendance at the Bethel Installation of Officers.* \_\_\_\_\_

*1 Point for each time a Jobie-To-Bee participates in a social activity planned by the Bethel.* \_\_\_\_\_

*1 Point for each time a Jobie-To-Bee participates in activities that promote Job's Daughters.* \_\_\_\_\_

### **Section 3: Special Events**

*1 Point for each Jobie-To-Bee attending Grand Session.*

\_\_\_\_\_

*1 Point for each Jobie-To-Bee attending Mini Session.*

\_\_\_\_\_

*1 Point for each Jobie-To-Bee participating in the Mid America HIKE.*

\_\_\_\_\_

*1 Point for each Jobie-To-Bee participating in the Lincoln/Truman (L/T) HIKE.*

\_\_\_\_\_

*1 Point for each Jobie-To-Bee attending the Miss Missouri/Jr. Miss Missouri pageant.*

\_\_\_\_\_

*1 Point for each Jobie-To-Bee attending the Grand Bethel Honored Queen's reception.*

\_\_\_\_\_

### **Section 4: Fundraising/Charity**

*1 Point for each Jobie-To-Bee who participates in the Bethel fundraising activities.*

\_\_\_\_\_

*1 Point for Jobies-To-Bee planning their own fundraising activity.*

\_\_\_\_\_

*1 Point for each Jobie-To-Bee who collects pledges for L/T or Mid America HIKE.*

\_\_\_\_\_

*1 Point for each Jobie-To-Bee that participates in the Bethel charity project.*

\_\_\_\_\_

**TOTAL POINTS**

\_\_\_\_\_

***To receive the award there needs to be a minimum of 10 Points with at least 1 Point earned in each section.***

*Date:* \_\_\_\_\_

*Number of Active Bees:* \_\_\_\_\_

*Please list the names of the active Jobies-To-Bee (print clearly or type the names)*

*Jobie-To-Bee Keeper Signature:* \_\_\_\_\_

*Bethel/Bee Guardian Signature:* \_\_\_\_\_

*This form must be postmarked by May 31, 2012 and sent to the Grand Marshal:*

*Mom Judy Royce*

*8721 Ione Lane*

*St. Louis MO 63123*

[\*jjordan0907@yahoo.com\*](mailto:jjordan0907@yahoo.com)